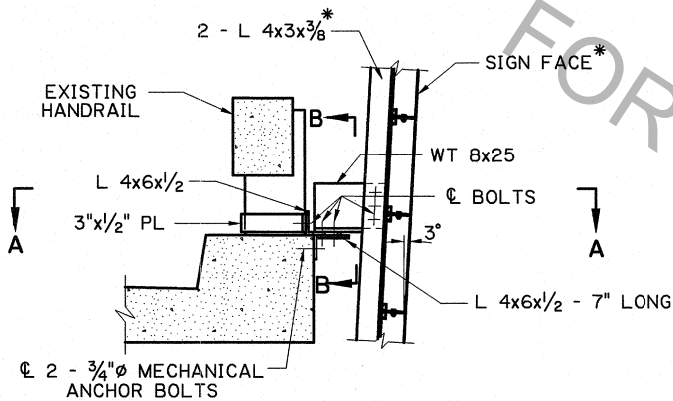
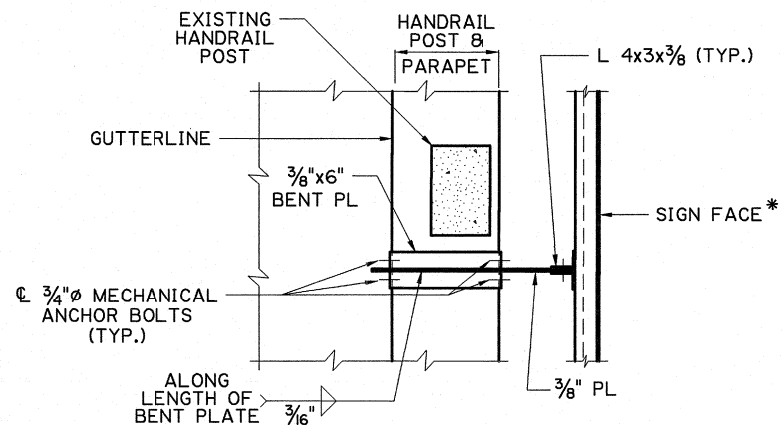


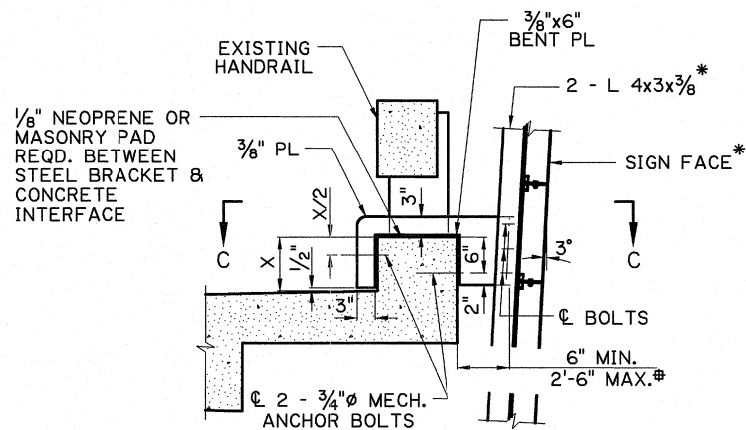
SECTION A-A



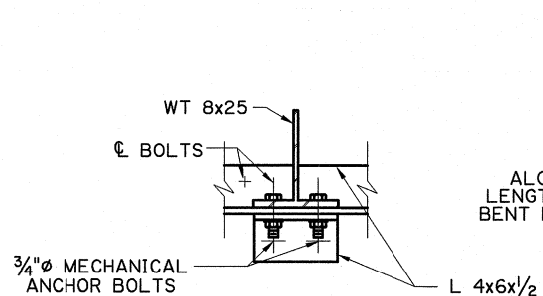
POST BRACKET



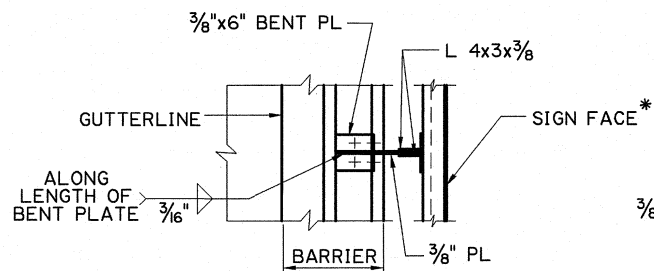
SECTION C-C



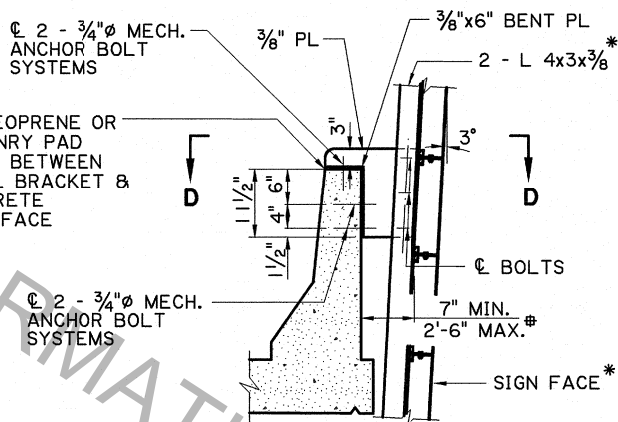
SIDEWALK BRACKET



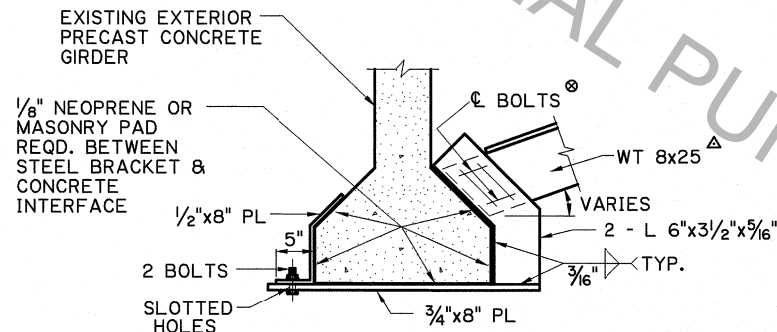
SECTION B-B



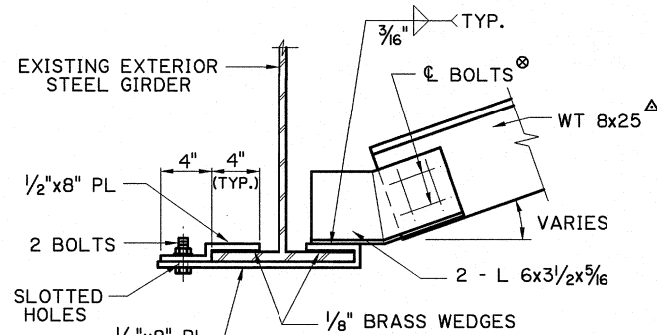
SECTION D-D



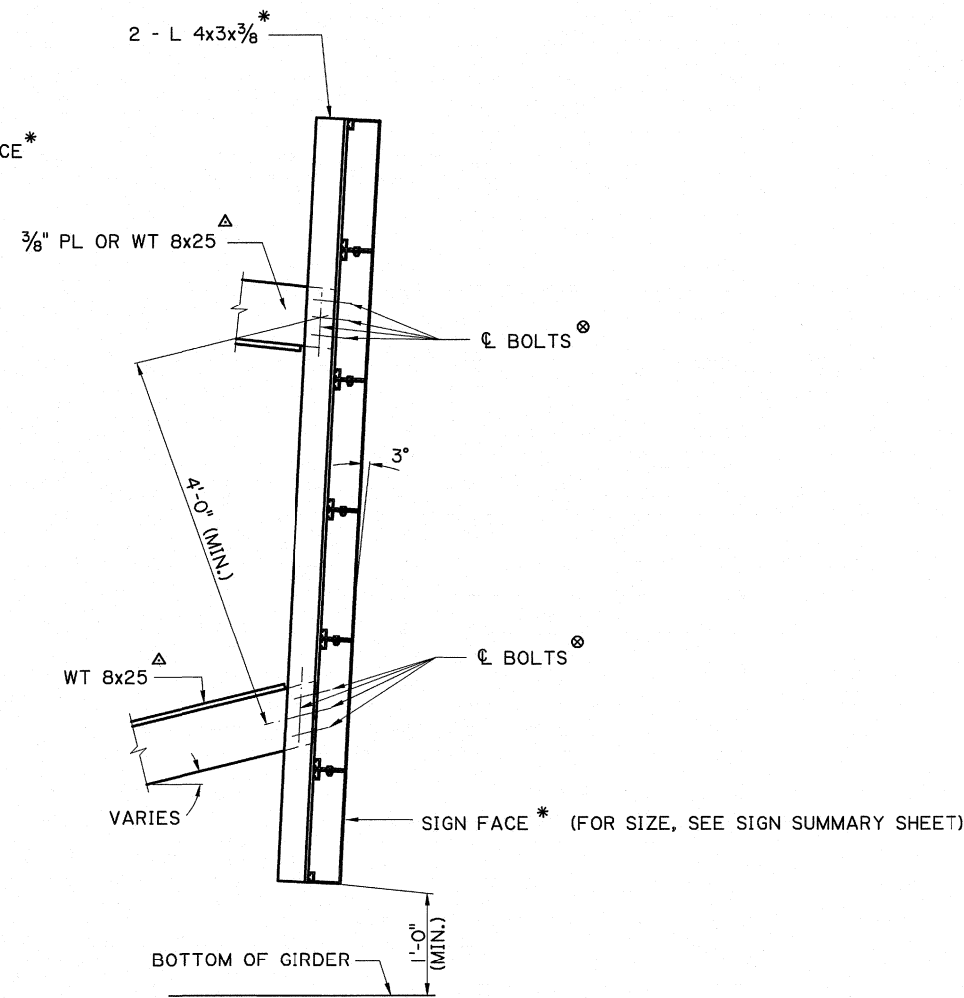
BARRIER RAIL BRACKET



PRESTRESSED CONCRETE GIRDER BRACKET

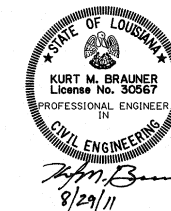


STEEL GIRDER BRACKET



ELEVATION

SIGN CONNECTION DETAIL



**NOTES:**

- THIS SHEET TO BE USED WITH WIND LOAD MAP AND GENERAL NOTES
- ALL BRACKET MEMBERS SHALL BE STEEL (A-36), UNLESS OTHERWISE NOTED, BOLTS TO BE 3/4" ASTM A-325 AND BE GALVANIZED. BOLTS SHALL HAVE TWO (2) FLAT WASHERS, ONE (1) LOCK WASHER & ONE (1) HEX NUT, ALL GALVANIZED.
- DAMAGED GALVANIZED SURFACES SHALL BE REPAIRED IN ACCORDANCE WITH STA. SPECS. SUBSECTION 811.08.
- DIMENSIONS OF EXISTING BRIDGE MEMBERS TO BE OBTAINED IN FIELD PRIOR TO FABRICATION OF MOUNTING BRACKET BY THE CONTRACTOR AND ADJUSTED AS DIRECTED BY THE PROJECT ENGINEER.
- NUMBER OF POST, CURB OR GIRDER BRACKETS REQUIRED SHALL BE DETERMINED IN THE FIELD (WITH TWO (2) EACH MIN.) FOR EACH SIGN LOCATION, AS DIRECTED BY THE PROJECT ENGINEER.
- UNLESS OTHERWISE NOTED, PAYMENT SHALL BE MADE UNDER ITEM 729-13-00100 "MOUNTING (BRIDGE FASCIA MOUNTED)" PER EACH.
- MECHANICAL ANCHOR SYSTEM SHALL BE FROM THE APPROVED MATERIALS LIST AND SHALL BE GALVANIZED.
- \* PAYMENT TO BE UNDER ITEM 729-06-00100.
- ⊗ SLOT ONE HOLE AND FIELD DRILL THE OTHERS
- Δ LENGTH VARIES.
- ⊕ WHEN DIMENSIONS EXCEED 2'-6", SEE SIDEWALK BARRIER RAIL BRACKET DETAIL, SHEET 16 OF 16.

SHEET NUMBER	
DESIGNED	K. BRAUNER
CHECKED	P. FOSSIER
DATE	JAN. 2011
PROJECT	
STATE	LA
PARISH	
FEDERAL PROJECT	
REVISION	
BY	K.M.B.
DATE	
DESCRIPTION	UPDATED FOR 2016 SPECIFICATIONS
NO.	02-13-17
	15 OF 16
<b>FASCIA MOUNTED BRACKETS</b> (STEEL)	
BD.2.7.1.0.15 - OVERHEAD TRAFFIC SIGNS	
BRIDGE AND STRUCTURAL DESIGN	